



YUYANG INDUSTRIAL CO., LIMITED DONGGUAN YUYANG INSTRUMENT CO., LTD

Address: 405, Fourth Floor, No.1, Longtong Road, Xinhe Community, Wanjiang District, Dongguan City, China
MB:86-13825722581 Fax: 86-769-26622869 Email: jackson.sun@yuyangtest.com

Specification and Picture

Items 01:

YY621 Profile Projector



Description:

1. Vertical profile projector is mainly used for the measurement of the mechanical parts of the length, angle, contour and surface shape.
2. Rotation 360 optical measuring vertical profile projector can inspect all kinds of surface and outline of complicated work-Pieces, cam, screw thread, gear, perform milling cutter and so on.
3. Optical measuring vertical profile projector widely used in the trade of mechanism, meter, electricity, light industry, college, research institute and measurement-inspecting department.
4. Measurement data can output and connect printer and computer.

Specification:

YUYANG INDUSTRIAL CO., LIMITED

Model	YY621				
Table	The metal table's size	340 x152 mm			
	The glass table's size	196x96mm			
	X-axis travel	150mm			
	Y-axis travel	50mm			
	Z-axis travel	90 (for focus)			
	Measuring accuracy	3+L/200 um			
	Resolution (X-axis,Y-axis):	0.001 mm			
Projector screen	Screen size (mm):	Ø 312 Used range>Ø 300(with the meter line)			
	Screen rotary range:	0°~360°			
	Resolution (X-axis,Y-axis):	1' or 0.01°			
Lens	Magnification:	10X option	20X option	50X option	100X option
	Object view (mm):	Ø30	Ø15	Ø6	Ø3
	Working distance (mm):	77.7	44.3	38.4	25.3
	Max.workpiece height:	90mm	90mm	90mm	90mm
Data Processing System	DP-100multi-function data processing system, appearing in English, can be used to gather the data and measure the point , line, circle, angle and distance.				
Illumination	The illumination of transmission and reflection: 24V/150W-halogen lamp.				
Power	110V/220V(AC), 50/60HZ, Total power=400W				
Cold	Forced air cooling				
Dimensions	800*800*1150mm				
Weight	260kg				

Characteristics:

- 1) Solid framework, large LCD touch screen and advanced QM2.0 software;
- 2) High quality optics for crisp and clear images;
- 3) Adjustable LED surface and contour illumination;
- 4) High resolution industrial CCD camera;
- 5) 6.5X Detente zoom lens changeable within the range of 30-190x magnification;
- 6) Easy to operate user interface;
- 7) Extended function of printing, saving and exporting data;
- 8) Excel, word or txt multi-format report output, and DXF input and output;
- 9) Non-contact optical height measurement;
- 10) Automatic edge-detecting function;
- 11) Make Save and input the program;
- 12) Map photo and measurement;
- 13) Dimension label function;
- 14) SPC statistical function;

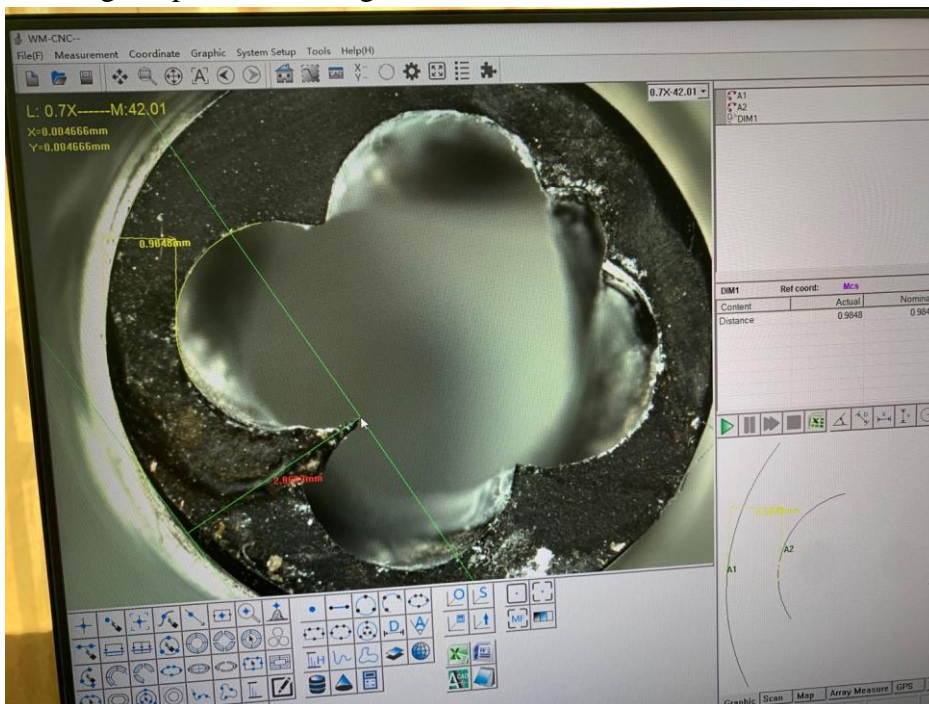
Features:

1. It is mainly used for the measurement of the mechanical parts of the length, angle, contour and surface shape.
2. 400mm Measurement Profile Projector can inspect all kinds of surface and outline of complicated work-Pieces, cam, screw thread, gear, perform milling cutter and so on.
3. 400mm Measurement Profile Projector Used Profile Projector widely used in the trade of mechanism, meter, electricity, light industry, college, research institute and measurement-inspecting department.
4. Measurement data can output and connect printer and computer.

It has good quality optical system, imaging lens clear and accurate magnification. In the transmission of the illumination, the profile measurement error is less than 0.08%. Coordinate measurement deviation is $\leq (3 + L/200)$ um, L be regarded as the length of measured parts (mm). Instrument equipped with a dedicated mini-printer and foot switch, DC-3000 Digital Readout, which makes display and measuring very handy.

Usages:

1. Profile projector is mainly used for the measurement of the mechanical parts of the length, angle, contour and surface shape.
2. It is widely used in meter, electron, aerospace machinery, light industry, college, research institute and measurement-inspecting department.
3. This instrument can inspect all kinds of surface and outline of complicated work-Pieces, cam, screw thread, gear, perform milling cutter and so on.



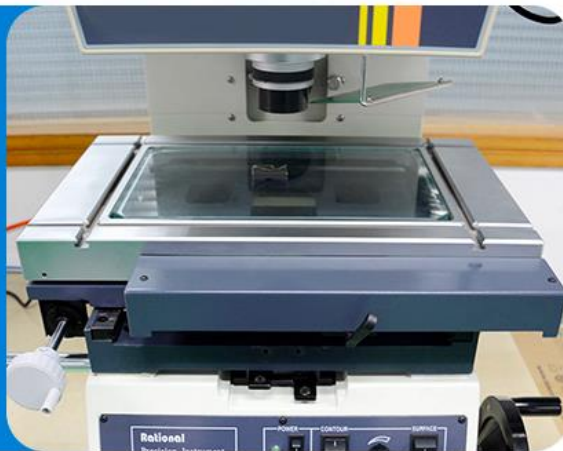


High efficiency and clear image

The workpiece image of vertical projector can be either full positive image or reverse image (no need to worry about upside down or left-right distinction). The measurement is simple, intuitive and efficient. Professional optics plus simple and intuitive, high efficiency. Professional optics to ensure clear imaging; The instrument has excellent optical quality, clear objective image and

T-slot table

T-groove worktable is adopted to facilitate the installation of various clamping tools without restriction. The worktable adopts chromium plating process, which is much stronger than the hardness and flatness of baking paint, ensuring long service life and not easy to fall. Dust proof and anti-interference.



Multi function data processing table

The digital measuring projector has excellent quality and stable performance. The instrument is equipped with foot switch and multi-function data processing table, data output and sampling are very convenient, making the measurement faster and more efficient.



Multi function key panel

Multi function key panel: power on key, light on key and adjusting knob, indicating light on key and adjusting knob, indicating light on key and adjusting knob, indicating light on key and adjusting knob



WIDELY APPLICATION

APPLICATION FIELD

Electronics, hardware and plastic, precision metal stamping plate, screen printing plate, acrylic plate, LCP film, PCB board, LCD\TFT, glass cover plate, TP, frame of ultra-large LCD, etc.



QUALITY IS THE GUARANTEE OF CREDIBILITY

Focus On Quality , Reputation First

01 COMPANY EQUIPMENT AND TALENTED PERSON

- The company has advanced equipment and skilled professionals, and with strong design and production capabilities, strictly implement production management and inspection systems.



02 PRODUCTS WIDE RANGE OF APPLICATIONS

- Machinery, electronics, molds, plastics, hardware, circuit boards, rubber, precision hardware, precision stamping, connectors, connectors, terminals, watches, home appliances, computers, liquid crystal TV , automobiles, aviation, watches, etc.



03 OUR PRODUCTS

- We have specialized in this industry for more than ten years and with talent professionals ,main products are : Manual video measuring machine,CNC video measuring system , Gantry CNC large range measuring machine, one key rapid measuring instrument ,flatness measuring machine ,defective appearance and character detection equipment.



04 QUICK AFTER -SALES SERVICE

- With years of experience and technology, the company provides customers with professional solutions to achieve mutual benefit and win-win results. quickly respond to customer requests and follows up to ensure to provide the resolution for customers timely , from production, technical R&D to marketing , We all have professional team to serve you.



Software introduce:

measurement software main functions are as follows:

(1) measuring element:

Can measure the 12 kinds of elements, such as point, line, circle, arc, ellipse, rectangle, trough, o-rings, distance, Angle and open cloud line, closed cloud line).

Features:

Measurement method variety (automatic discriminant, mining point measurement, comparison, tolerance contrast measurement. Preset element), can satisfy different customers' needs, greatly improve the ease of use and measuring precision.

There are many single point sampling method: the mouse point, cross line edge point, amplified by points.

Closed to measure the perimeter of the cloud line, area and center of gravity, the use of three interpolation algorithm, for the most accurate measuring method of cloud line.

Can undertake box to choose measurement more round, fast and accurate measurement of multiple round at a time.

The measured data can be saved as a DXF file, or. BMP images, and the user programformat.

(2) the macro measurement function

Macro measurement function is that will be some measure, command associated with a button. Click on the button that starts the macro measurement function, macro measurement function automatically completes the tectonic movement, decrease the times of user mouse operation and improve the work efficiency.


Note: macro measurement is different from the user program function, macro measure does not record source, coordinate position measurement condition, etc. Run the macro function, also do not move the workbench, polishing, etc. 16 software provides a set of macro measure function, the user can edit the macro measurement function button icon. Macro function interface is as follows:

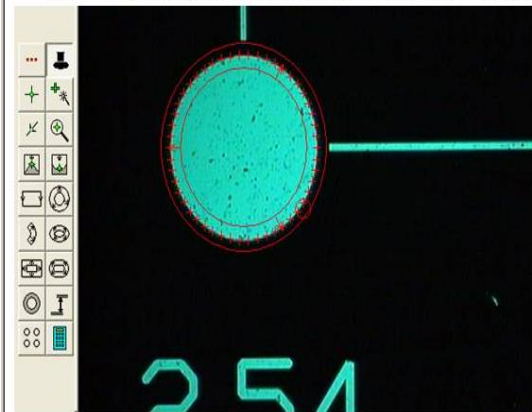


(3) Automatic capture measurement

Click, and then use the mouse to circle to the edge of the workpiece, can automatically find edge line, circle or arc. The following figure, will automatically be framed round.

(3) 自动捕捉测量

点击 ，然后用鼠标圈去套住工件的边缘，即可自动寻边得到线，圆或者弧。如下图，会自动框住圆。



(4) element structure:

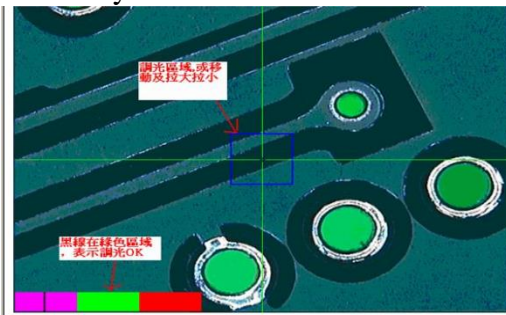
Elements to construct powerful. MEGA structure provide 10 kinds of 2 d elements method ("translation ", "rotation" and "extraction", "combination", "parallel" and "vertical", "mirror", "symmetry", "intersection", "tangent") tectonic geometry elements. MEGA elements of 2 d structure makes it hard for users to easily cope with some measure of elements, so as to improve the work efficiency.

(5) Auto-focus function

Provide a precise focus and shooting function and through measuring height value focus, or the current is obtained by a point coordinates.

(6) Auxiliary dimmer

That move light indicator, instructs the user when is the best time to light intensity, avoid the measurement error brought by the due to the lighting, improve the measuring accuracy and measuring efficiency.



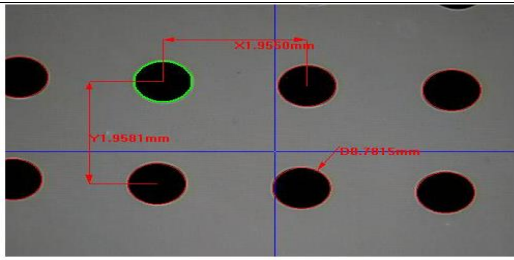
(7)Graphics functions:

Have perfect image processing and display function (local amplification, scaling, translation, window display, full screen), makes the measurement more image, intuitive, easy to user operation. Rolling middle mouse button, zoom in on graphics, hold key not to put in the moving the mouse, the mobile graphics.

(8)Tagging function:

Can directly in the plot and the elements of the image graphics on the Angle,distance, distance of X direction and Y direction distance and radius of circle (arc),round (arc) diameter, arc length. The user be clear at a glance.

Image window and drawing window can synchronize display measurement elements and annotations. Images can be hidden window drawing graphics, can synchronize to delete, select image window and 2 d graphics window graphic elements. Below to indicate two round X direction and Y direction distance, and the radius of the circle.



(9)Tolerance

Improve the dimensional tolerance of computing power. Can set the default tolerance zone. Conform to the national standard of the form tolerance capacity, can calculate the shape tolerance, really straight degree, circle, arc roundness. Position tolerance calculation contains position degree, parallel degree, vertical degree, slope and concentricity, degree of symmetry. Out-of-tolerance alarm automatically, and with red warning. Round size tolerance input dialog is illustrated below.



(10) DXF file import programming

After importing the DXF file, the software will prompt the user operation step by step, when establish the workpiece coordinate system, the DXF file user program to complete the import. The software will automatically generate value in the name of the element name. When running a user program, will produce DXF file and image texture contrast.

(11)Reporting features

Excel、Word、AutoCAD,TXT 中。Measurement data can be exported to Excel, Word, AutoCAD, TXT. When running the user program, but will import data in rows or columns way to Excel. Import to the report, they can choose whether to export the graphics and bitmap. Pictures, below is the same workpiece measurement after five times, automatic export to Excel inthe report.

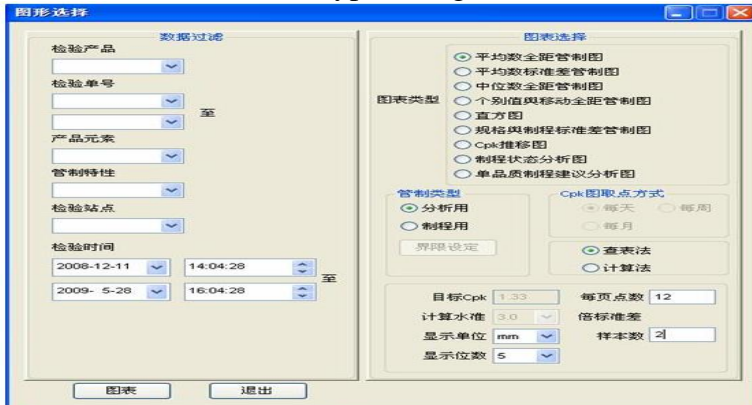
序号	元素	内容	名义值	上公差	下公差	1	2	3	4	5
1	CIR1	X坐标	0.4137	0.01	0.01	0.4137	0.4137	0.4137	0.4137	0.4137
2		Y坐标	1.2897	0.01	0.01	1.2897	1.2897	1.2897	1.2897	1.2897
3		半径	0.3918	0.01	0.01	0.3918	0.3918	0.3918	0.3918	0.3918
4		直径	0.7837	0.01	0.01	0.7837	0.7837	0.7837	0.7837	0.7837
5	CIR2	X坐标	-1.5413	0.01	0.01	-1.5413	-1.5413	-1.5413	-1.5413	-1.5413
6		Y坐标	1.3736	0.01	0.01	1.3736	1.3736	1.3736	1.3736	1.3736
7		半径	0.3911	0.01	0.01	0.3911	0.3911	0.3911	0.3911	0.3911
8		直径	0.7822	0.01	0.01	0.7822	0.7822	0.7822	0.7822	0.7822
9	CIR3	X坐标	-1.6284	0.01	0.01	-1.6284	-1.6284	-1.6284	-1.6284	-1.6284
10		Y坐标	-0.5845	0.01	0.01	-0.5845	-0.5845	-0.5845	-0.5845	-0.5845
11		半径	0.3923	0.01	0.01	0.3923	0.3923	0.3923	0.3923	0.3923
12		直径	0.7845	0.01	0.01	0.7845	0.7845	0.7845	0.7845	0.7845
13	CIR4	X坐标	-3.4958	0.01	0.01	-3.4958	-3.4958	-3.4958	-3.4958	-3.4958
14		Y坐标	1.4565	0.01	0.01	1.4565	1.4565	1.4565	1.4565	1.4565
15		半径	0.3924	0.01	0.01	0.3924	0.3924	0.3924	0.3924	0.3924
16		直径	0.7848	0.01	0.01	0.7848	0.7848	0.7848	0.7848	0.7848
17	CIR5	X坐标	2.3668	0.01	0.01	2.3668	2.3668	2.3668	2.3668	2.3668
18		Y坐标	1.2057	0.01	0.01	1.2057	1.2057	1.2057	1.2057	1.2057
19		半径	0.3913	0.01	0.01	0.3913	0.3913	0.3913	0.3913	0.3913
20		直径	0.7825	0.01	0.01	0.7825	0.7825	0.7825	0.7825	0.7825
21	CIR6	X坐标	0.2469	0.01	0.01	0.2469	0.2469	0.2469	0.2469	0.2469
22		Y坐标	-2.6277	0.01	0.01	-2.6277	-2.6277	-2.6277	-2.6277	-2.6277
23		半径	0.3922	0.01	0.01	0.3922	0.3922	0.3922	0.3922	0.3922
24		直径	0.7844	0.01	0.01	0.7844	0.7844	0.7844	0.7844	0.7844

(12)Online SPC functions

MEGA 2 d provide independent, professional SPC software, for subsequent processing of measured data. Software and SPC software seamless connection, measurement software after completion of measurement data imported into the SPC database automatically, without human input again, all the control limits set was done in measuring software, no need to set the SPC software, thus greatly improve the efficiency. SPC provides process and analysis with the control charts. Provide control charts are: average range control chart, the average standard deviation control charts, the median range control chart,

individual values and moving average control chart, histogram, CPK graph, specification standard deviation control charts, the process standard deviation control charts, standard deviation comparison chart, process suggested analysis diagram, etc. To generate graphics can use eight decision rules for decision. Their charts and data can be printed and imported into Excel.

Chart to choose the chart type dialog box.



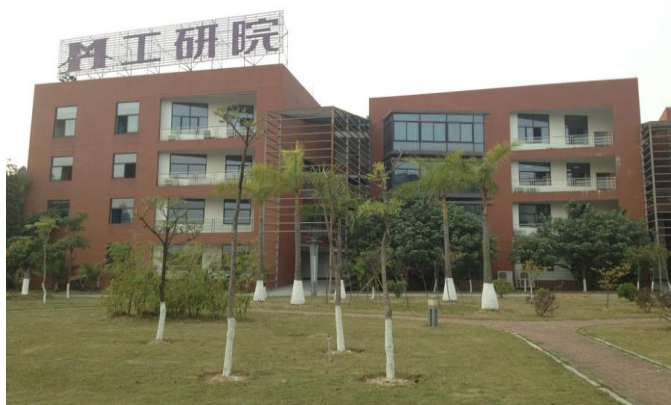
(13) Help system

provides a complete help system. Help users are not familiar with software, quickly master the use of the software.

YUYANG INDUSTRIAL CO., LIMITED

Company Profile

DONGGUAN YUYANG INSTRUMENT CO., LTD is located in Xinhe Industrial Area, Wanjiang District, Dongguan City. Also **YUYANG INDUSTRIAL CO., LIMITED** is our private-owned cooperation in HK. By supporting from Mechanical CNC and Software R&D core team of YUYANG Manufacturing engineering institute. YUYANG specializes in producing and R&D for flammability testing machine, textile testing machine, toys testing equipment, Footwear Testing Equipment. Continue the advanced design technology and concept, excellent technology of producing and outstanding system of quality management, YUYANG aims at "manufacture carefully, service by heart", devoting the best products, counseling and service to schools, manufacturing enterprise, and third party testing industry.



Up to today YUYANG products spread to countrywide users. We take pride in having a long list of satisfied customers, who always look up to us for their various requirements. Most of our customers are satisfied from our products and services and as a result of which, we are getting repeat orders. Some of our important customers include:



SGS in France, SGS in Vietnam, SGS in China, SGS in Korea, Intertek in China, SAT in China, BACL in Shenzhen, NSF in Shanghai, ITS, BV, TUV etc

The quality proves value; the effort brings success

What your concerning is our struggling all the time.....



Showroom:



公司荣誉



ISO9001 证书



Some of our strategic partners as follow:

1. Master Tec Wire & Cable Sdn Bhd (Malaysia)
2. Philippine Lino Corporation
3. National Building and Marketing Company (Saudi Arabia)
4. DNG TECHNOLOGIES PVT. LTD (India)
5. Bureau Veritas Certification Hong Kong
6. LE TOY VAN LIMITED (UK)
7. Walton Hi-Tech Industries Ltd (Bangladesh)
8. Pioneer Laboratory (Qatar)
9. Tagawa Sangyo Co., Ltd. (Japan)
10. JOHRI INSTRUMENTS (India)
11. RAMP IMPEX PVT. LTD (India)
12. RNJY TRADING & GENERAL MERCHANDISE (Philippines)
13. TÜV Rheinland (India) Pvt. Ltd.
14. Testing and Certification Center Russia
15. Bell Fix S.r.l.s. (Italy)
16. Wimpey Laboratories (Dubai)
17. Thai Quality Products Co.,Ltd. (Thailand)
18. Micaply Ltd (India)
19. Labtech Middle East LLC. (Dubai)
20. VTEC Laboratories, Inc (USA)
21. Arab Center for Engineering Studies (ACES)
22. Material Lab (UAE)
23. Global Certificate Service (Turkey)
24. Boulder Developments Ltd (UK)
25. Bharat Test House Pvt. Ltd (Toys Testing Lab)
26. Alpha Test House (Toys Testing Lab)
27. Bp Plyboard Pvt. Ltd (India)
28. Thomas Bell-Wright International Consultants (TBWIC) (Fire Testing Laboratory)
29. Teraohm Powermark Sdn Bhd (Malaysia)
30. Trocellen S.E.A. Sdn. Bhd. (Malaysia)
31. Ohio University (USA)
32. Ponsa (Spain)
33. Grefortec (Brazil)
34. PT. Inti Jaya Presisi (Indonesia)
35. APPLE ELECTRONIKS (India)
36. 3G Technology (Korea)
37. TÜV Rheinland (Shanghai) Pvt. Ltd.
38. AIYam Technical Trading Est. (Saudi Arabia)
39. HASCELİK KABLO SANAYI VE TICARET A.S. (Turkey)
40. TÜV SÜD (Thailand) Limited
41. Centro Qualità Tessile Srl (Italy)
42. Trio Middle East Trading Company (Dubai)
43. Mountaineering Instruments, Corporation (Philippine)
44. SUMMIT FOOTWEAR CO.,LTD (Thailand)
45. IDEAL FASTENER SVM FERMUAR SANAYI (Turkey)
46. Prowide Promotions (Turkey)
47. PT. Voksel Electric Tbk (Indonesia)
48. PT. MATTEL INDONESIA
49. Yumark Enterprise (Thailand)
50. ARRIVAL LTD (UK)
51. PLASTLAB SOCIETA' CONSORTILE A R.L (Italy)
52. LE DAN SERVICE TRADING CO., LTD (Vietnam)
53. ERA Polymers (Australia)

54. Interscience Fire Laboratory (UK)
55. French National Institute for Industrial Environment and Risks (Ineris)
56. ABB Group (France)
57. PT. PROPACK KREASI MANDIRI (Indonesia)
58. CelLink Corp.(USA)
59. Nanogate North America
60. VINAM OIL TOOLS JSC (Vietnam)
61. ALTO Baby LLC (USA)
62. Federal University of Rio Grande do Sul (Brazil)
63. KJ Engineering (South Korea)
64. Baran mühendislik kalibrasyon-ILYAS CALAVUL (Turkey)
65. SISCO. (Sater Scientific & Industrial Solution Co.)